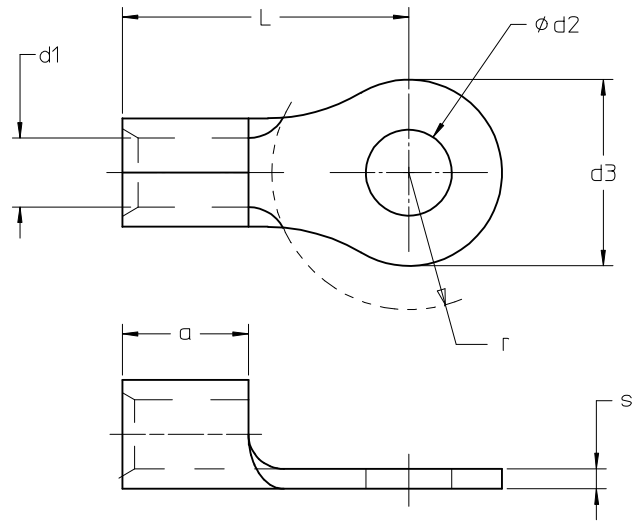


MATERIAL NUMBER	ALTERNATE PART NUMBER	NOM WIRE SIZE AND RANGE (MM ²)	NOM BOLT SIZE (MM)	DIMENSIONS						
				a MIN	d1 MIN	d2 ± 0,7	d3 ±0,25	L MAX	r MIN	s NOM
193230001	AA1-332-M2,5	1 (0,5 - 1)	2,5	4,25	1,6	2,77	6,45	11,5	4	0,71
193230002	AA1-332-M3	1 (0,5 - 1)	3	4,25	1,6	3,29	6,45	11,5	4,5	0,71
193230003	AA1-332-M3,5	1 (0,5 - 1)	3,5	4,25	1,6	3,79	6,45	11,5	4,5	0,71
193230004	AA1-321-M4	1 (0,5 - 1)	4	4,25	1,6	4,39	7,92	12,5	6	0,71
193230005	AA1-322-M5	1 (0,5 - 1)	5	4,25	1,6	5,39	11,86	15,2	6,5	0,71
193230006	BB2,5-323-M3	2,5 (1 - 2,5)	3	4,25	2,1	3,29	6,35	11,5	4,5	0,79
193230007	BB2,5-323-M3,5	2,5 (1 - 2,5)	3,5	4,25	2,1	3,79	6,35	11,5	4,5	0,79
193230008	BB2,5-337-M4	2,5 (1 - 2,5)	4	4,25	2,1	4,39	7,92	12,5	6	0,79
193230009	BB2,5-339-M5	2,5 (1 - 2,5)	5	4,25	2,1	5,39	8,69	14,5	6,5	0,79
193230010	BB2,5-325-M6	2,5 (1 - 2,5)	6	4,25	2,1	6,61	11,86	16,5	7,5	0,79
193230011	BB2,5-318-M8	2,5 (1 - 2,5)	8	4,25	2,1	8,51	13,56	19,0	10	0,79
193230012	C6-336-M4	6 (2,5 - 6)	4	6,00	3,3	4,39	7,16	15,2	6	1,02
193230013	C6-328-M5	6 (2,5 - 6)	5	6,00	3,3	5,39	9,53	15,5	6,5	1,02
193230014	C6-330-M6	6 (2,5 - 6)	6	6,00	3,3	6,61	13,46	17,4	7,5	1,02
193230015	C6-330-M8	6 (2,5 - 6)	8	6,00	3,3	8,51	13,46	19,5	10	1,02
193230016	C6-340-M10	6 (2,5 - 6)	10	6,00	3,3	10,63	14,94	21,5	12	1,02



- NOTES:
 1. MATERIAL: TIN-PLATED COPPER WITH BRAZED BARREL SEAM.
 2. PARTS ARE ROHS COMPLIANT.

SALES DRAWING

RELEASE EC NO: WNA2011-0580 DRAWN: ETHRODAHL 2011/09/15 CHKD: JMACNEIL 2011/09/15 APPR: JMACNEIL 2012/12/11 1	QUALITY SYMBOLS ▽=0 ▽=0	GENERAL TOLERANCES (UNLESS SPECIFIED)		DIMENSION STYLE MM ONLY		SCALE ---	DESIGN UNITS METRIC	THIRD ANGLE PROJECTION			
		4 PLACES ± --- ± ---	mm INCH	DRAWN BY ETHRODAHL	DATE 2011/09/15	TITLE METRIC RING TERMINALS VERSAKRIMP 0,5 - 6 MM2					
		3 PLACES ± --- ± ---		CHECKED BY JMACNEIL	DATE 2011/09/15	MOLEX INCORPORATED					
		2 PLACES ± 0.13 ± ---		APPROVED BY JMACNEIL	DATE 2012/12/11	DOCUMENT NO. SD-19323-001					
DRAFT WHERE APPLICABLE MUST REMAIN WITHIN DIMENSIONS		SEE CHART		SHEET NO. 1 OF 1							
THIS DRAWING CONTAINS INFORMATION THAT IS PROPRIETARY TO MOLEX INCORPORATED AND SHOULD NOT BE USED WITHOUT WRITTEN PERMISSION											