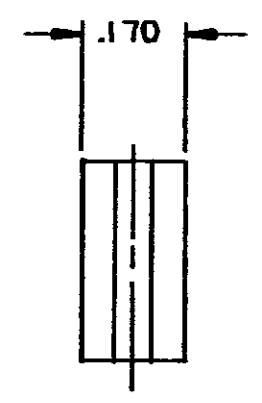
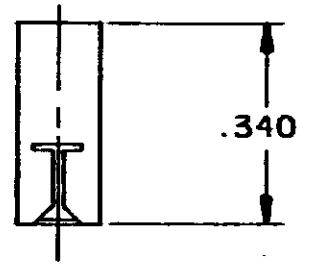
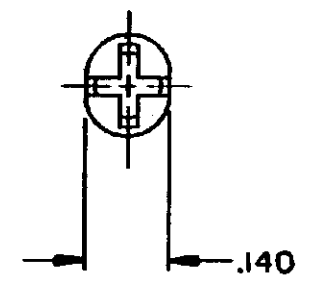


DRAWING MADE IN THIRD ANGLE PROJECTION

© COPYRIGHT 1960 BY AMP INCORPORATED, HARRISBURG, PA.  
 ALL INTERNATIONAL RIGHTS RESERVED. AMP INCORPORATED PRODUCTS  
 COVERED BY U. S. AND FOREIGN PATENTS AND/OR PATENTS PENDING.

		1		LOC AA	DIST 60/2
REVISIONS					
P	F	ZONE	LTR	DESCRIPTION	DATE
0	✓		0	RLSD	7/15/82 KS

D  
C  
B  
A



1. ALL DIMENSIONS SHOWN ARE FOR REFERENCE ONLY UNLESS OTHERWISE SPECIFIED.

553594 -1 AS SHOWN

UNLESS OTHERWISE SPECIFIED DIMENSIONS ARE IN INCHES. TOLERANCES ON: DECIMALS ± ANGLES ±			CONTRACT NO DR <i>A. Shults</i> 7-15-82 CHK <i>M. D. ...</i> 7-19-82		AMP INCORPORATED Harrisburg, Pa.	
MATERIAL NYLON (NATURAL)		APPD <i>[Signature]</i> APD <i>[Signature]</i> DSGN APPD		NAME CAP, STUFFER, .090 DIA		
FINISH		OTHER APPD		SIZE <b>B</b>	CODE IDENT NO <b>00779</b>	DRAWING NO <b>553594</b>
				SCALE 4:1	SHEET 1 OF 1	

AMP 1470-15 (7-73)

CUSTOMER DRAWING