



Quick Start Guide

TSL2584TSV EVM

TSL2584TSV Light-To-Digital Color Ambient Light Sensor

Version 1.2



Contents

1	Out of the Box	3
2	Software Installation	3
3	Connect Hardware	3
4	Start the Application	3
5	Contact and Support	5



1 Out of the Box

Each TSL2584TSV Evaluation Kit comes with the following components:

- Controller board v2.1
- TSL2584TSV Daughterboard
- USB Cable with A connector and mini B connector
- Flash Drive with Application Software and Documents



Figure 1 TSL2584TSV EVM Kit

2 Software Installation

Most PCs should have one or more Universal Serial Bus (USB) ports. Install the ams flash drive into an unused USB port. Double-click the **Setup.exe** file on the flash drive, or click Start -> Run and type E:setup.exe and press Enter. IMPORTANT: Use the appropriate drive letter in the above command to install the software. Flash Drive will commonly be assigned the next available drive letter for example C: hard drive D: CD-ROM E: flash drive

The Setup Wizard will open and guide you through the installation of the TSL2584TSV host software, (Figures 2 through 8). To re-install, run the setup.exe program again. To remove the software from your computer (Figure 9), select ams -> TSL2584TSV EVM -> Uninstall TSL2584TSV EVM or use the Windows Control Panel.

3 Connect Hardware

Plug the TSL2584TSV Daughterboard into the Controller board. (Figure 1) Always use ESD procedures when handling the EVM.

Using the enclosed USB cable, plug the mini-B connector into the EVM module. Using the other end of the cable, plug the USB A-connector into a USB port on the computer.

4 Start the Application

Start the application using the TSL2584TSV EVM icon on the desktop.



Figure 2 Welcome Screen

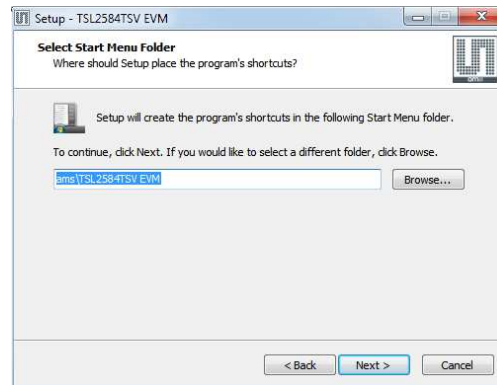


Figure 5 Select Start Menu Folder

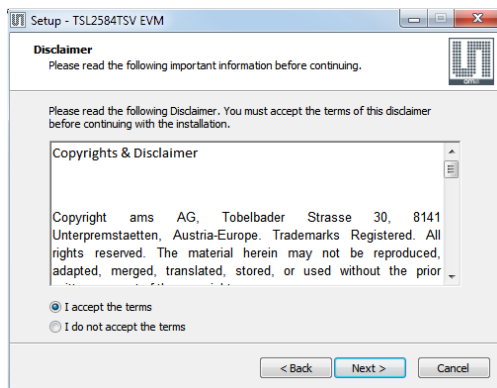


Figure 3 Liability Disclaimer

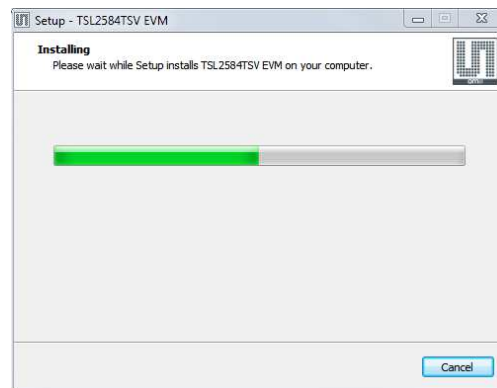


Figure 6 Installation in Progress

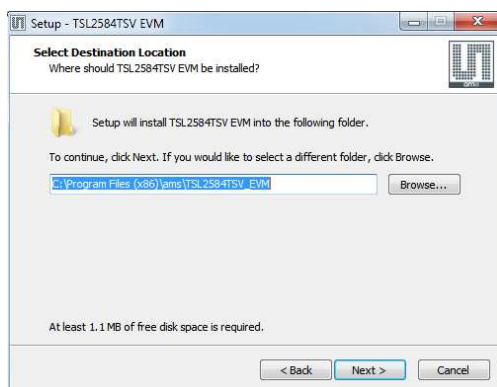


Figure 4 Select Installation Folder

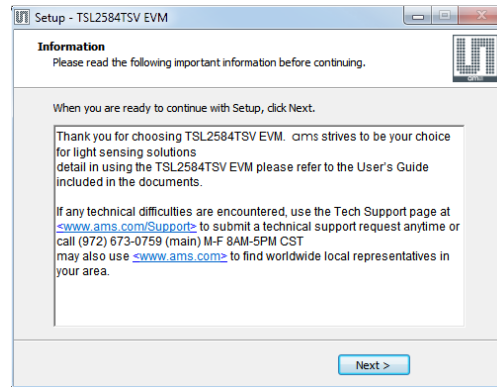


Figure 7 Information Screen

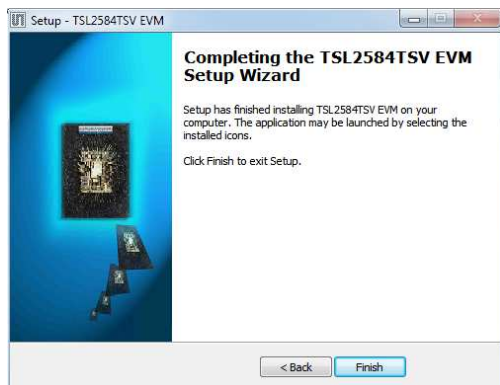


Figure 8 Installation Completed Successfully

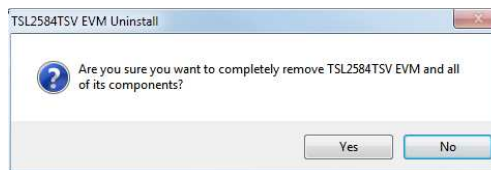


Figure 9 Remove Installation

5 Contact and Support

For detail in using the TSL2584TSV EVM please refer to the User's Guide included in the documents.

If any technical difficulties are encountered, use the Tech Support page at www.ams.com/Support to submit a technical support request anytime or call (469) 298-4200 (main) M-F 8AM-5PM CST

You may also use www.ams.com to find worldwide local representatives in your area.