

4

3

2

1

THIS DRAWING IS UNPUBLISHED.

RELEASED FOR PUBLICATION

© COPYRIGHT

ALL RIGHTS RESERVED.

LOC DIST


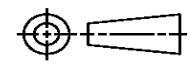
REVISIONS

P	LTR	DESCRIPTION	DATE	DWN	APVD

REPLACED BY OCEAN STYLE APPLICATOR PART NUMBER

FOR REPLACEMENT PARTS FOR APPLICATOR REFER TO ADDITIONAL PAGE(S). SPARE PARTS KIT (IF LISTED) WILL REMAIN AVAILABLE.

THE REPLACEMENT OCEAN STYLE APPLICATOR HAS THE SAME TERMINATOR/PRESS INTERFACE AS APPLICATOR

THIS DRAWING IS A CONTROLLED DOCUMENT.		DWN	 TE Connectivity		
DIMENSIONS:		CHK			
TOLERANCES UNLESS OTHERWISE SPECIFIED:		APVD	NAME		
		PRODUCT SPEC	RESTRICTED TO		
		APPLICATION SPEC	SIZE	CAGE CODE	DRAWING NO
MATERIAL	FINISH	WEIGHT	A3	C-	
		SCALE	SHEET	OF	REV

THIS DRAWING IS UNPUBLISHED. RELEASED FOR PUBLICATION. BY TYCO ELECTRONICS CORPORATION. ALL RIGHTS RESERVED.

LOC	DIST	REVISIONS			
P	LTR	DESCRIPTION	DATE	DWN	APVD
A	66	M	ECR-14-017130	11-2014	RS LZ

PART NUMBER	REV	FIRST USED	TERMINATOR	FEED TYPE	DESCRIPTION
1238067-1	M	-	LEADMAKER	MECH POST FEED	CUTS CARRIER
1238067-2	M	-	BENCH	MECH PRE FEED	CUTS CARRIER
1238067-6	M	-	LEADMAKER	MECH POST FEED	CONTINUOUS CARRIER
7-1238067-1	M	-	LEADMAKER	MECH POST FEED	-1 AND SPARE PARTS
7-1238067-2	M	-	BENCH	MECH PRE FEED	-2 AND SPARE PARTS
7-1238067-6	M	-	LEADMAKER	MECH POST FEED	-6 AND SPARE PARTS
7-1238067-7	J	-	-	-	SPARE PARTS KIT

CRIMP DATA AMP TERMINAL AMP CRIMP SPECS
TERMINAL NAME: 2.5MM PITCH HPI CONTACT

CRIMP	SIZE	TYPE	RANGE
WIRE	1.40 [0.055 IN]	F	0.08mm ² -0.30mm ²
INSUL	1.78 [0.070 IN]	F	Ø1.0-1.9 [0.39-.075 IN]
WIRE STRIP LENGTH	1.9-2.5 [0.075-.098 IN]	APPL INSTRUCTION 408-8322	

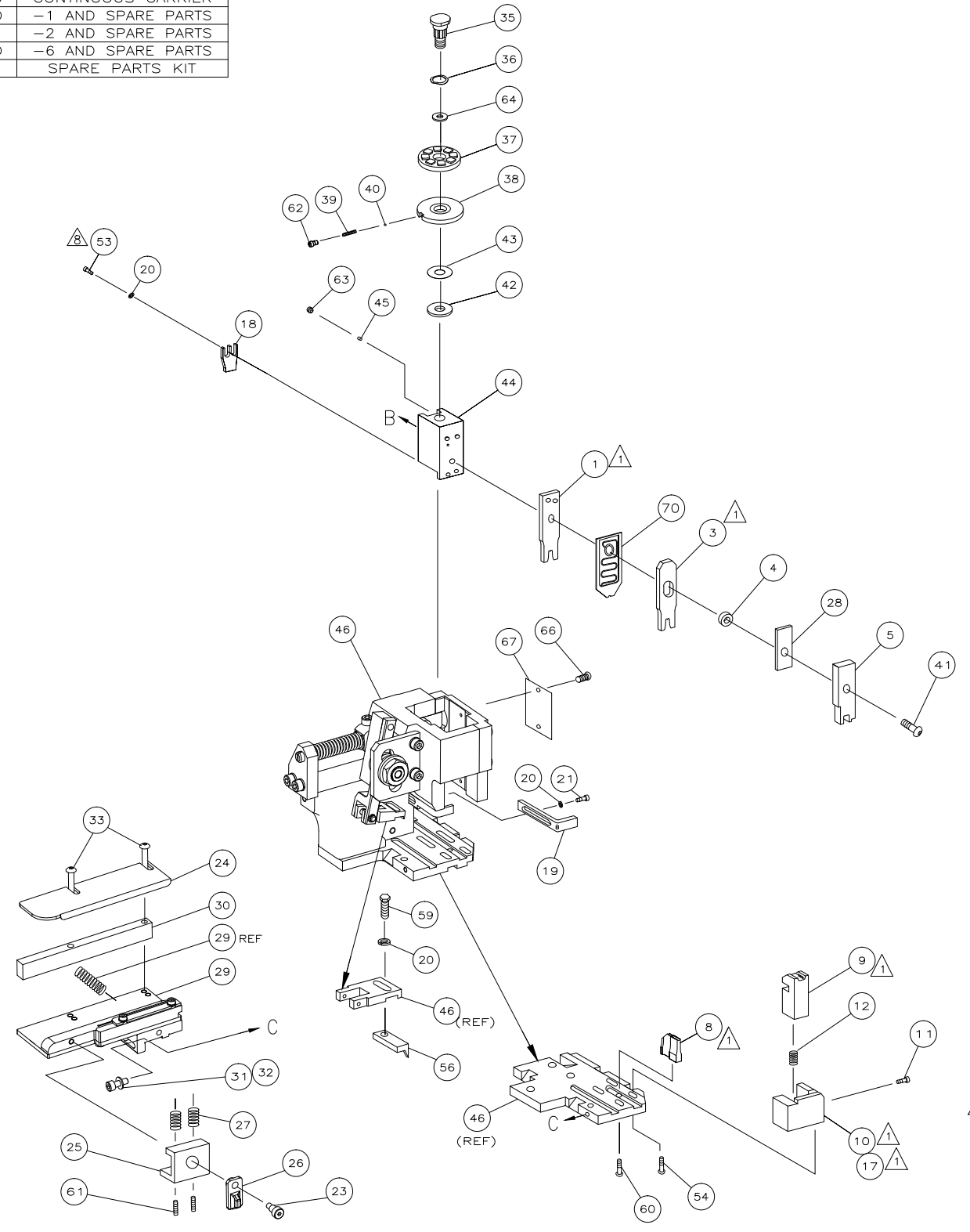
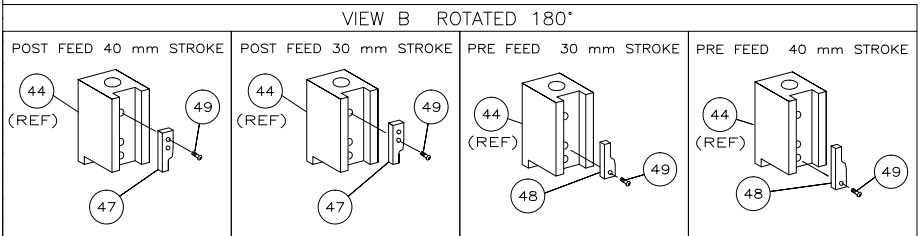
WIRE STRIP LENGTH: 1.9-2.5 [0.075-.098 IN]

TERMINAL APPLIED	AMP PN	MFR PN	FEED
	440134		7.0 [0.276 IN]

WIRE SIZE mm ² AWG	CRIMP HEIGHT	PIN PN & LENGTH [IN]
0.30mm ²	0.75 ±0.05 [0.030 ±0.002 IN]	5-354779-6 [.3270]
0.22mm ²	0.70 ±0.05 [0.028 ±0.002 IN]	6-354779-0 [.3290]
0.14mm ²	0.65 ±0.05 [0.026 ±0.002 IN]	6-354779-4 [.3310]
0.08mm ²	0.60-0.65 [0.024-.026 IN]	6-354779-6 [.3320]

SET UP GAGE	LAYOUT
458637-3	L2499

- 1. RECOMMENDED SPARE PARTS.
- 2. GREASE RAM, CAM, CAM FOLLOWER AND FEED ROD LIGHTLY.
- 3. LUBRICATE DAILY PER THE APPLICATOR INSTRUCTION SHEET SUPPLIED WITH THE APPLICATOR.



QTY	REQD	PER	ASSY	PART NO	DESCRIPTION	ITEM NO			
-	1	1	1	1	1	1	1238067	PRINT, APPLICATOR LOG SHEET	73
-	1	1	1	1	1	1	1338705-1	DOCUMENTATION PACKAGE	71
-	1	1	1	1	1	1	2119791-5	SPACER, DEPRESSOR (WIRE DP)	70
-	1	1	1	1	1	1	461264-1	PLATE, IDENTIFICATION	67
-	2	2	2	2	2	2	21017-2	SCR,DRIVE(#2x.19)ID PLATE	66
-	1	1	1	1	1	1	986950-1	WASHER, FLAT PRECISION	64
-	1	1	1	1	1	1	3-18031-0	SCR,SKT SET(M6X6)RAM	63
-	1	1	1	1	1	1	18023-9	SCR,SHC(M4X6)INS DISC	62
-	2	2	2	2	2	2	2-18032-5	SCR,SET(M5X20)DRAG	61
-	1	1	1	1	1	1	18024-7	SCR,BHC(M4X10)ANVIL	60
-	1	1	1	1	1	1	5-18022-2	SCR,HEX(M4X8)FEED FINGER	59
-	1	1	1	1	1	1	1338685-1	PAWL, FEED	56
-	2	2	2	2	2	2	18024-8	SCR,BHC(M4x12)SHEAR HOLDER	54
-	2	2	2	2	2	2	18023-8	SCR,SHC(M4x5)TERM HLD DWN	53
-	1	1	1	1	1	1	18024-3	SCR,BHC(M3X10)CAM	49
-	1	1	1	1	1	1	1338675-1	CAM, PRE FEED 30 & 40 mm ST	48
-	1	1	1	1	1	1	1338676-1	CAM, POST FEED 30 & 40 mm ST	47
-	1	1	1	1	1	1	1320999-3	APPLICATOR BASIC SUBASSY	46
-	1	1	1	1	1	1	690191-1	PLUG, NYLON	45
-	1	1	1	1	1	1	1338660-3	RAM	44
-	1	1	1	1	1	1	690125-1	WASHER, LAMINATED	43
-	1	1	1	1	1	1	1-690124-3	WASHER, RAM	42
-	1	1	1	1	1	1	2-18024-6	SCR,BHC(M8X25)RAM	41
-	1	1	1	1	1	1	23241-1	BALL, STEEL	40
-	1	1	1	1	1	1	2-22278-7	SPRING, COMPRESSION	39
-	1	1	1	1	1	1	1320922-3	DISC, INSULATION	38
-	1	1	1	1	1	1	354777-1	WIRE DISC, PLASTIC	37
-	1	1	1	1	1	1	22480-5	WASHER, SPRING	36
-	1	1	1	1	1	1	690212-1	POST, RAM	35
-	2	2	2	2	2	2	18024-9	SCR,BHC(M4X16)STRIP GUIDE	33
-	1	1	1	1	1	1	18027-2	WASHER, FLAT(M4)	32
-	1	1	1	1	1	1	1-18023-2	SCR,SKT CAP(M4X12)MOUNT BLOCK	31
-	1	1	1	1	1	1	1320908-4	SPACER, STRIP GUIDE	30
-	1	1	1	1	1	1	1633073-3	STRIP GUIDE PLATE ASSY	29
-	1	1	1	1	1	1	1-455888-0	SPACER, FRONT SHEAR DEP	28
-	2	2	2	2	2	2	1-22284-0	SPRING, DRAG	27
-	1	1	1	1	1	1	356835-1	LEVER, DRAG RELEASE	26
-	1	1	1	1	1	1	240792-1	DRAG, TERMINAL	25
-	1	1	1	1	1	1	1320928-1	PLATE, STRIP GUIDE	24
-	1	1	1	1	1	1	980371-4	SCR,SHC SHLD	23
-	1	1	1	1	1	1	1-18023-1	SCR,SHC(M4X10)STRIPPER	21
-	4	4	4	4	4	4	18025-2	WASHER,LOCK(M4)STRIPPER	20
-	1	1	1	1	1	1	1-1338987-3	STRIPPER	19
-	1	1	1	1	1	1	2-690518-4	HOLDER, TERMINAL	18
-	1	1	1	1	1	1	1338684-1	HOLDER, SHEAR, FRONT (NO-CUT)	17
-	1	1	1	1	1	1	3-22280-3	SPRING, SHEAR	12
-	1	1	1	1	1	1	356885-4	STOP, SHEAR	11
-	1	1	1	1	1	1	1320921-1	HOLDER, SHEAR, FRONT (CUT)	10
-	1	1	1	1	1	1	462006-1	SHEAR, FLOAT (FRONT)	9
-	1	2	2	2	2	2	1338690-7	ANVIL	8
-	1	1	1	1	1	1	2-455889-9	DEPRESSOR, SHEAR (FRONT)	5
-	1	1	1	1	1	1	2-238011-8	SPACER, BLOCK CRIMPER	4
-	1	2	2	2	2	2	4-1213077-6	CRIMPER, INSULATION	3
-	1	2	2	2	2	2	5-456402-3	CRIMPER, WIRE	1

THIS DRAWING IS A CONTROLLED DOCUMENT.

OWN: R.O.WILSON, CHK: R.O.WILSON, APVD: T.ELBIN

TYCO ELECTRONICS CORPORATION, Harrisburg, PA 17105-3608

SIDE FEED HD-1 APPLICATOR

APPLICATOR INSTRUCTION SHEET

SIZE: A1, CASE CODE: 00779, DRAWING NO: 1238067

CUSTOMER DRAWING, SCALE: 1 OF 1, REV: M