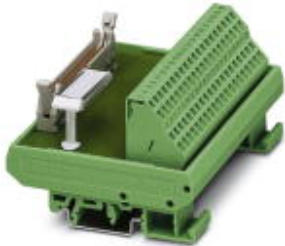


Interface module - FLKM 10/ZFKDS - 2302887

Please be informed that the data shown in this PDF Document is generated from our Online Catalog. Please find the complete data in the user's documentation. Our General Terms of Use for Downloads are valid (<http://download.phoenixcontact.com>)



Standard 1:1 FLK module, with spring-cage connection and flat-ribbon cable connector, no. of positions 10

The illustration shows a 40-position version



Key commercial data

| | |
|----------------------|---|
| Packing unit | 1 PCE |
| GTIN |  4 017918 941406 |
| Custom tariff number | 85369010 |
| Country of origin | GERMANY |

Technical data

Dimensions

| | |
|--------|-------|
| Width | 34 mm |
| Height | 77 mm |
| Depth | 51 mm |

Ambient conditions

| | |
|---|------------------|
| Ambient temperature (operation) | -20 °C ... 50 °C |
| Ambient temperature (storage/transport) | -20 °C ... 70 °C |

General

| | |
|---|-----------|
| Nominal voltage U_N | < 50 V AC |
| | 60 V DC |
| Max. current carrying capacity per branch | 1 A |
| Number of positions | 10 |

Interface module - FLKM 10/ZFKDS - 2302887

Technical data

General

| | |
|-----------------------|--------------|
| Mounting position | Any |
| Standards/regulations | IEC 60664 |
| | DIN EN 50178 |
| | IEC 62103 |

Connection data for connection 1

| | |
|--|------------------------|
| Connection name | PCB connection |
| Connection method | Spring-cage connection |
| Conductor cross section solid min. | 0.2 mm ² |
| Conductor cross section solid max. | 4 mm ² |
| Conductor cross section stranded min. | 0.2 mm ² |
| Conductor cross section stranded max. | 2.5 mm ² |
| Conductor cross section AWG/kcmil min. | 24 |
| Conductor cross section AWG/kcmil max | 12 |

Connection data for connection 2

| | |
|-----------------------|------------------------------|
| Connection name | Flat-ribbon cable connection |
| Number of connections | 1 |
| Connection method | IDC/FLK pin strip (2.54 mm) |
| Number of positions | 10 |

Classifications

eCl@ss

| | |
|------------|----------|
| eCl@ss 4.0 | 27250313 |
| eCl@ss 4.1 | 27250313 |
| eCl@ss 5.0 | 27250313 |
| eCl@ss 5.1 | 27250313 |
| eCl@ss 6.0 | 27242608 |
| eCl@ss 7.0 | 27141152 |
| eCl@ss 8.0 | 27141152 |

ETIM

| | |
|----------|----------|
| ETIM 2.0 | EC001434 |
| ETIM 3.0 | EC001604 |
| ETIM 4.0 | EC001604 |
| ETIM 5.0 | EC002780 |

Interface module - FLKM 10/ZFKDS - 2302887

Classifications

UNSPSC

| | |
|---------------|----------|
| UNSPSC 6.01 | 30211824 |
| UNSPSC 7.0901 | 39121421 |
| UNSPSC 11 | 39121421 |
| UNSPSC 12.01 | 39121421 |
| UNSPSC 13.2 | 39121421 |

Accessories

Accessories

Cable/conductor

Cable - FLK 10/EZ-DR/ 50/KONFEK - 2299204



Round cable set, with two 10-pos. socket strips, (1:1 connection), cable length: 0.5 m

Cable - FLK 10/EZ-DR/ 100/KONFEK - 2299217



Round cable set, with two 10-pos. socket strips (1:1 connection), cable length: 1 m

Cable - FLK 10/EZ-DR/ 150/KONFEK - 2299220



Round cable set, with two 10-pos. socket strips (1:1 connection), cable length: 1.5 m

Interface module - FLKM 10/ZFKDS - 2302887

Accessories

Cable - FLK 10/EZ-DR/ 200/KONFEK - 2299233



Round cable set, with two 10-pos. socket strips, (1:1 connection), cable length: 2 m

Cable - FLK 10/EZ-DR/ 300/KONFEK - 2299246



Round cable set, with two 10-pos. socket strips (1:1 connection), cable length: 3 m

Cable - FLK 10/EZ-DR/ 400/KONFEK - 2299259



Round cable set, with two 10-pos. socket strips (1:1 connection), cable length: 4 m

Cable - FLK 10/EZ-DR/ 600/KONFEK - 2299262



Round cable set, with two 10-pos. socket strips (1:1 connection), cable length: 6 m

Cable - FLK 10/EZ-DR/ 800/KONFEK - 2299275



Round cable set, with two 10-pos. socket strips (1:1 connection), cable length: 8 m

Interface module - FLKM 10/ZFKDS - 2302887

Accessories

Cable - FLK 10/EZ-DR/1000/KONFEK - 2299288



Round cable set, with two 10-pos. socket strips (1:1 connection), cable length: 10 m

Cable - FLK EZ-DR.../.../... - 2295059



Round cable, with preassembly, not shielded, variable cable length

Drawings

Circuit diagram

