

- +
- +
- +
- +

+

- +
- +

» Measurement+Patch Adapter

## J-Link Measurement+Patch Adapter

The J-Link Patch Adapter allows easy customized wiring between J-Link and targets that do not provide a standard debug connector that fits to any of the adapters available for J-Link (e.g. the Discovery Boards from ST Microelectronics). It comes with a set of colored jumper wires, allowing easy differentiation of the debug signals. The J-Link Patch Adapter also provides test points for all debug signals to allow easy access to them for checking signal integrity. It has a standard 20-pin 0.1" socket towards the J-Link debug probe and a standard 20-pin 0.1" header on the target side, so it can be plugged-in directly to J-Link, maintaining a 1:1 connection. For increased flexibility VTref on pin 1 and the target supply voltage on pin 19 can be interrupted by means of two jumpers.



[Click to enlarge](#)



[Click to enlarge](#)

### J-Link Measurement+Patch Adapter in use



[Click to enlarge](#)

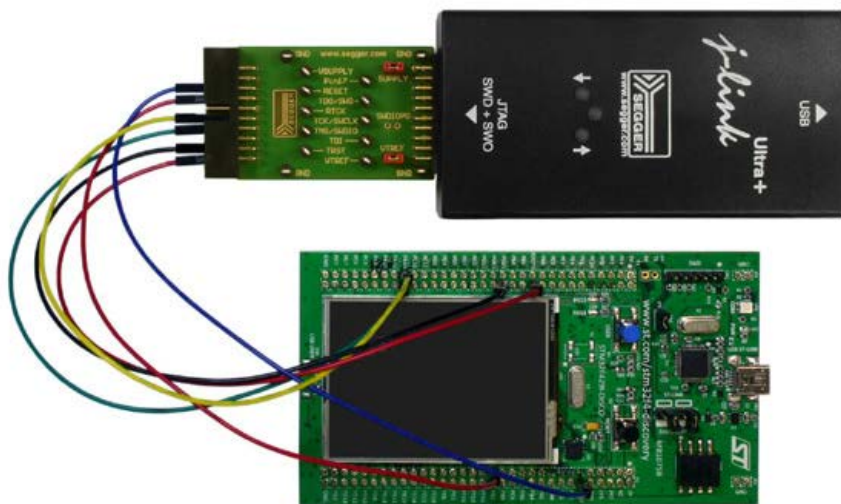
 **Head office Germany**

Phone: +49-2103-2878-0  
 Fax: +49-2103-2878-28  
 E-mail: [info@segger.com](mailto:info@segger.com)  
[www.segger.com](http://www.segger.com)

 **US office**

Phone: +1-978-874-0299  
 Fax: +1-978-874-0599  
 E-mail: [info@segger-us.com](mailto:info@segger-us.com)  
[www.segger-us.com](http://www.segger-us.com)





[Click to enlarge](#)

[Imprint](#) [Disclaimer](#) [Sitemap](#)

[back to top](#)