

Power Dividers

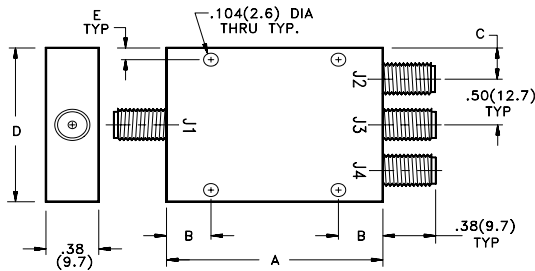
Three Way Isolated

True Three Way Power Division

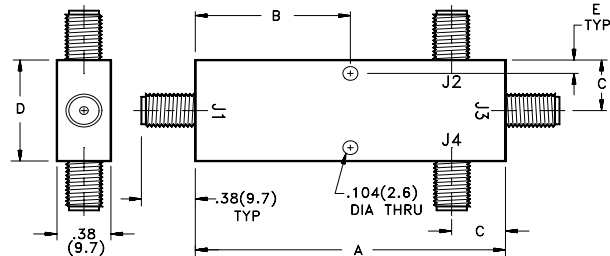
- Full 2.0 - 18.0 GHz bandwidth units
- Low VSWR - High Isolation
- Rugged Stripline Construction
- Meets Mil-E-5400 and Mil-E16400 Environment



Midwest Microwave's series of high performance isolated Three Way Power Dividers are true three way dividers. They are small, lightweight, ruggedly constructed stripline units that possess inherently low insertion loss and VSWR with high isolation and excellent phase and amplitude tracking. Units are available in ultra-wideband frequency bandwidths covering the entire range of 2.0 - 18.0 GHz. The units meet the environmental specifications of MIL-E-5400 and MIL-E-16400.



CASE STYLE 1



CASE STYLE 2

ELECTRICAL SPECIFICATIONS

FREQUENCY RANGE (GHz)	CASE STYLE	MODEL NUMBER	AMPLITUDE BALANCE (dB)	PHASE BALANCE (degrees)	INSERTION LOSS (dB) max	ISOLATION (dB) min	VSWR max	INPUT POWER max(W)
0.5-2.0	1	PWD-5520-03-SMA-79	0.5	5	1.0	15	1.50	5
2.0-18.0	2	PWD-5532-03-SMA-79	0.5	5	1.0	20	1.50	10
2.0-18.0	1	PWD-5533-03-SMA-79	0.5	10	1.2	15	1.80	10

MECHANICAL SPECIFICATIONS - INCHES (mm)

CASE STYLE	A	B	C	D	E	WEIGHT	
						Oz	Gr
1	3.00 (76.2)	0.63 (16.0)	0.250 (6.35)	1.50 (38.1)	0.080 (2.0)	3.15	89
2	2.50 (63.5)	1.25 (31.8)	0.375 (9.5)	0.75 (19.0)	0.080 (2.0)	1.80	51

Note: 1. Specifications assume that all of the outputs are terminated with a load that has a VSWR not greater than 2.0:1.
2. TNC or NType output connectors are available by substituting "TNC" or "NNN" for "SMA" in the Model Number.