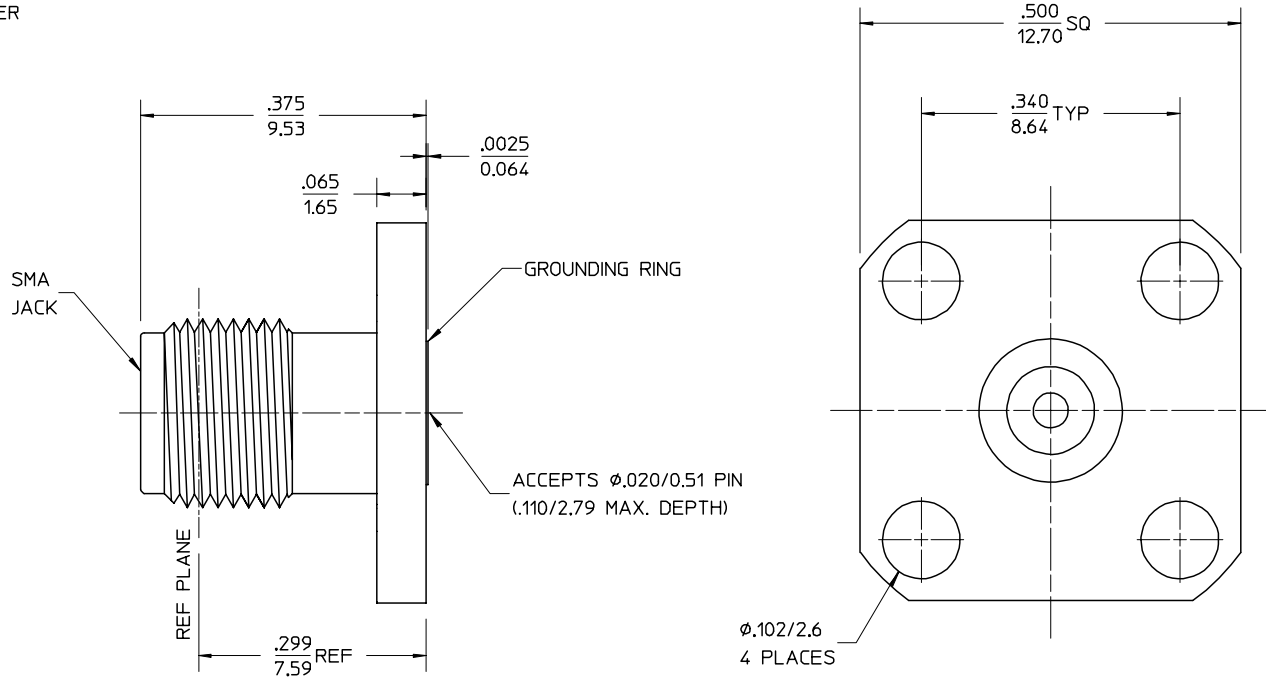


MATERIALS AND FINISHES:  
 BODY STAINLESS STEEL  
 PASSIVATED

CENTER CONTACT BERYLLIUM COPPER  
 PLATED GOLD

INSULATOR TEFLON



PART # 73251-0140

MIL-STD-348, FIGURE 310-2	INTERFACE
PS-89675-2910	ELECTRO/MECH PERFORMANCE
SPECIFICATION	DESCRIPTION

CHG: NEW RELEASE	EC NO URF-0233	DESCRIPTION	UNLESS OTHERWISE SPECIFIED DIMS ARE INCHES AND ANGLES ARE DEGREES. 1. ✓ 63 ALL OVER. 2. NO CHATTER OR NON-UNIFORM SURFACE FINISH ALLOWED. 3. PARTS TO BE FREE OF BURRS & SHARP EDGES .005 MAX BREAK, & EXTERNAL THREADS TO BE ROLLED OR SINGLE POINT. 4. EXTERNAL THREADS TO BE ROLLED OR SINGLE POINT. 5. DIAMETERS TO BE CONCENTRIC WITHIN .003 TIR.
	DRWN: TEF 06/21/99		
A	CHK: DHG 06/21/99		
	APPR: GMH 06/21/99		

UNLESS OTHERWISE SPECIFIED DIMS ARE INCHES AND ANGLES ARE DEGREES.  
 1. ✓ 63 ALL OVER.  
 2. NO CHATTER OR NON-UNIFORM SURFACE FINISH ALLOWED.  
 3. PARTS TO BE FREE OF BURRS & SHARP EDGES .005 MAX BREAK, & EXTERNAL THREADS TO BE ROLLED OR SINGLE POINT.  
 4. EXTERNAL THREADS TO BE ROLLED OR SINGLE POINT.  
 5. DIAMETERS TO BE CONCENTRIC WITHIN .003 TIR.

QUALITY SYMBOLS	GENERAL TOLERANCES: (UNLESS SPECIFIED)	SCALE	DESIGN UNITS	THIRD ANGLE PROJECTION
MAJOR	mm INCH	—	mm INCH	<input type="checkbox"/> mm <input checked="" type="checkbox"/> INCH
CRITICAL	4 PLACES ± .0005			
	3 PLACES ± .005			
	2 PLACES ± .01			
	1 PLACE ± .1			
	ANGULAR: ± 1/2°			
	DRAFT WHERE APPLICABLE MUST REMAIN WITHIN DIMENSIONS			

DRAWN BY & DATE	EDC 12/10/97
CHECKED BY & DATE	DHG 01/09/98
APPROVED BY & DATE	GMH 01/09/98
CAD FILENAME	

DIMENSIONS: <input type="checkbox"/> mm <input checked="" type="checkbox"/> INCH		1	A
TITLE: SMA JACK, RECEPTACLE, 4 HOLE FLANGE MOUNT, ACCEPTS .020 DIA PIN SMA-JR/F		SHT	REV
MATERIAL NO. SEE NOTE		REVISE ON CAD ONLY	
DRAWING NO. SD-73251-014		SHEET NO. 1 of 1	
THIS DRAWING CONTAINS INFORMATION THAT IS PROPRIETARY TO MOLEX INCORPORATED AND SHOULD NOT BE USED WITHOUT WRITTEN PERMISSION.		SIZE B	