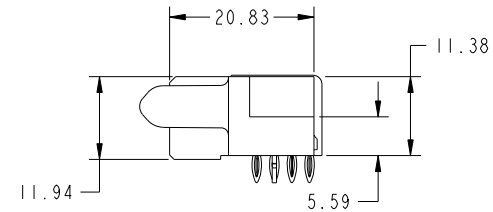
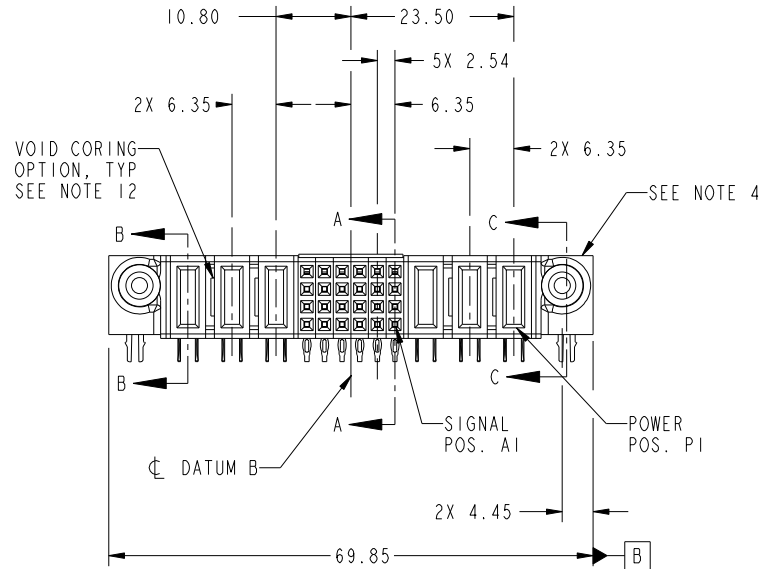
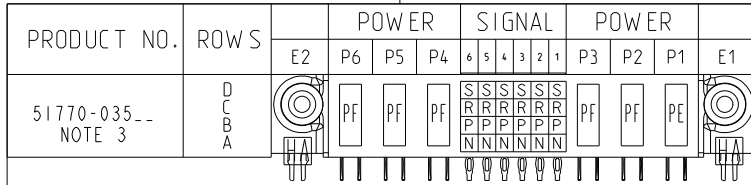


Tous droits strictement reserves. Reproduction ou communication a des tiers interdite sous quelque forme que ce soit sans autorisation écrite du propriétaire. Propriete de c FCI. Droits de reproduction FCI.



All rights strictly reserved. Reproduction or issue to third parties in any form whatever is not permitted without written authority from the proprietor. Property of FCI. Copyright FCI.



CODE	DIM "M" MATING LENGTH	CONTACT TYPE
PF	[2.34]	POWER
S	[N/A]	SIGNAL
R	[N/A]	SIGNAL
P	[N/A]	SIGNAL
N	[N/A]	SIGNAL
HA	[N/A]	HOLD-DOWN
PE	[1.07]	POWER

mat'l code				SEE NOTE 2		tolerances unless otherwise specified		CUSTOMER	
ltr	ecn no.	dr	date	linear	0.X ± 0.5	projection		COPY	
A	DG08-0285	W D	10/14/08	angles	0.XX ± 0.25	MIM		title	
B	DG08-0319	W D	11/13/08	enr	0.XXX ± 0.1	← MIM →		3P + 24S + 3P	
				chr	0° ± 2°	scale		R/A PRESSFIT RECEPTACLE	
				appd		1:1		product family	
								PwrBlade	
sheet index	revision sheet	B	B	B	B			size	
1	2	3	4					dwg no	
								A	
								51770-035	
								code	
								213	
								sheet	
								1 of 4	

www.fciconnect.com
 title 3P + 24S + 3P R/A PRESSFIT RECEPTACLE
 product family PwrBlade code 213
 size A dwg no 51770-035 sheet 1 of 4
 cage code 22526

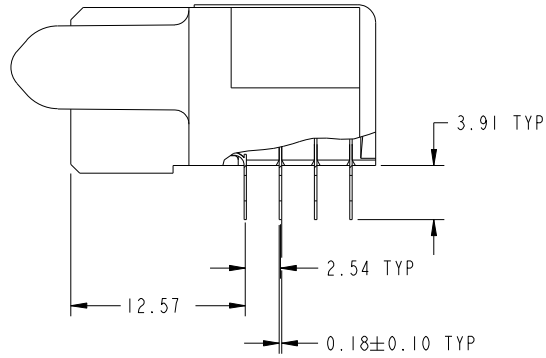
Pro/E

Tous droits strictement reserves. Reproduction ou communication a des tiers interdite sous quelque forme que ce soit sans autorisation écrite du propriétaire. Propriete de c FCI. Droits de reproduction FCI.

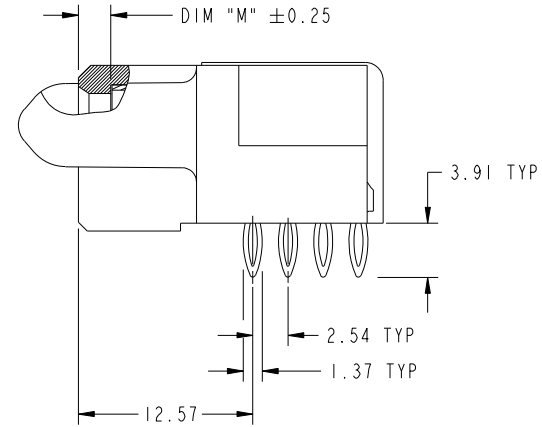
All rights strictly reserved. Reproduction or issue to third parties in any form whatever is not permitted without written authority from the proprietor. Property of FCI. Copyright FCI.



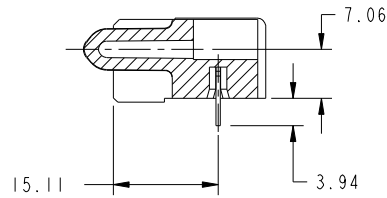
PRODUCT NUMBER
51770-035...
NOTE 3



BROKEN-OUT SECTION A-A
SCALE 2:1



BROKEN-OUT SECTION B-B
SCALE 2:1



SECTION C-C

mat'l code		SEE NOTE 2		tolerances unless otherwise specified		CUSTOMER		 www.fciconnect.com	
ltr	ecn no.	dr	date	linear	0.X ±0.5	COPY		title 3P + 24S + 3P R/A PRESSFIT RECEPTACLE	
B					0.XX ±0.25	projection			
					0.XXX ±0.1				
				angles	0 ±2°			product family PwrBlade code 213	
				dr	Warren Du 09/05/08	scale		size A	
				enr	Warren Du 09/05/08	1:1		dwg no 51770-035	
				chr	Gary Hsieh 09/05/08			sheet 2 of 4	
				appd	Joseph Hsia 09/05/08				
sheet index	revision sheet								

cage code 22526

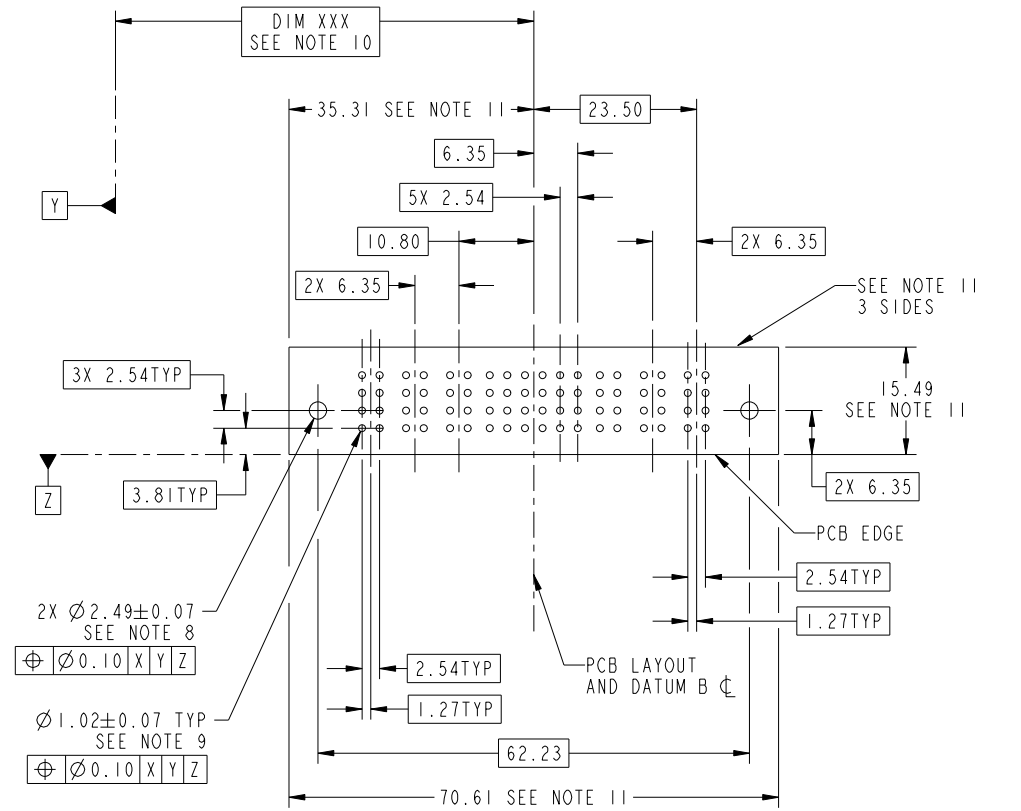
Pro/E

Tous droits strictement reserves. Reproduction ou communication a des tiers interdite sous quelque forme que ce soit sans autorisation ecrite du proprietaire. Propriete de c FCI. Droits de reproduction FCI.



All rights strictly reserved. Reproduction or issue to third parties in any form whatever is not permitted without written authority from the proprietor. Property of FCI. Copyright FCI.

PRODUCT NUMBER
51770-035-
NOTE 3



RECOMMENDED PCB LAYOUT

mat'l code		SEE NOTE		tolerances unless otherwise specified		CUSTOMER		FCI	
ltr	ecn no.	dr	date	linear	0.X ±0.5	COPY		www.fciconnect.com	
B					0.XX ±0.25	projection		title	
				angles	0.XXX ±0.1			3P + 24S + 3P R/A PRESSFIT RECEPTACLE	
				dr	Warren Du 09/05/08	MIM		product family PwrBlade code	
				enr	Warren Du 09/05/08			size 213	
				chr	Gary Hsieh 09/05/08	scale		dwg no 51770-035 sheet	
				appd	Joseph Hsia 09/05/08	1:1		3 of 4	
sheet index	revision sheet								

cage code 22526

Pro/E

Tous droits strictement reserves. Reproduction ou communication a des tiers interdite sous quelque forme que ce soit sans autorisation écrite du propriétaire. Propriete de c FCI. Droits de reproduction FCI.



All rights strictly reserved. Reproduction or issue to third parties in any form whatever is not permitted without written authority from the proprietor. Property of FCI. Copyright FCI.

PRODUCT NUMBER
51770-035--
NOTE 3

NOTES:

1. DIMENSIONS AND TOLERANCES ARE IN ACCORDANCE WITH ASME Y14.5M, 1994 UNLESS OTHERWISE SPECIFIED.

CONNECTOR NOTES:

- 2. HOUSING MATERIAL: UL 94 V-0 GLASS FILLED HIGH-TEMP THERMOPLASTIC
POWER CONTACT MATERIAL: COPPER ALLOY
SIGNAL PIN MATERIAL: COPPER ALLOY
- 3. SEE ITEM 7 & 8 IN PRINT 10064183 FOR PLATING SPEC OF 51770-035 AND 51770-035LF RESPECTIVELY.
- 4. MANUFACTURER'S NAME, P/N, AND DATE CODE TO APPEAR ON THIS SURFACE.
- 5. PRODUCT SPECIFICATION GS-12-149.
APPLICATION SPECIFICATION BUS-20-067.
- 6. PACKAGED IN TRAYS.

PCB NOTES:

- 7. ALL HOLE DIAMETERS ARE FINISHED HOLE SIZE.
- 8. MOUNTING HOLES, WHERE APPLICABLE, ARE UNPLATED.
- 9. $\varnothing 1.151 \pm 0.025$ DRILLED HOLES PLATED WITH
0.008 MIN SnPb OR Sn OVER 0.03
TO 0.08 Cu PLATING TO ACHIEVE
 $\varnothing 1.02 \pm .07$ HOLE.
- 10. "DIM XXX" TO BE DETERMINED BY THE CUSTOMER.
- 11. CONNECTOR KEEP-OUT ZONE.
- 12. THE VOID CORING IN BETWEEN POWER MODULES, SIGNAL MODULES AND END MODULES ARE OPTIONAL AND THE SHAPE MAY BE DIFFERENT FOR OPTIMIZE THE MOLDING PROCESS. THE VOID CORING WILL NOT EFFECT TO PRODUCT FUNCTION.
- 13. USE FCI CAM TOOL 430140-XXX TO APPLY CONNECTOR TO PCB.

mat'l code				SEE NOTE 2		tolerances unless otherwise specified		CUSTOMER		FCI		www.fciconnect.com		
litr	ecn no.	dr	date	linear	0.X ± 0.5		COPY		projection	title				
B					0.XX ± 0.25		← MIM →			3P + 24S + 3P R/A PRESSFIT RECEPTACLE				
					0.XXX ± 0.1		← MIM →			product family		PwrBlade		code
				angles	0° ± 2°		scale		size		dwg no		sheet	
				dr	Warren Du	09/05/08	1:1		A		51770-035		4 of 4	
				enrg	Warren Du	09/05/08								
				chr	Gary Hsieh	09/05/08								
				appd	Joseph Hsia	09/05/08								
sheet index	revision sheet													

cage code 22526

Pro/E