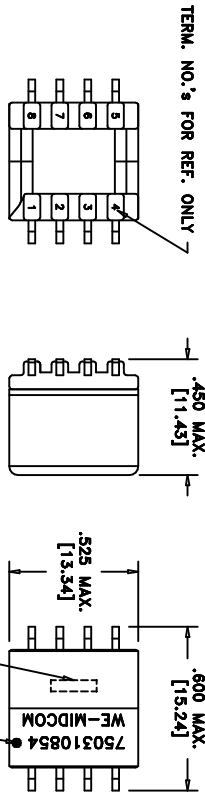


CUSTOMER TERMINAL	RoHS	LEAD(Pb)-FREE
5n96x, Ag4x	Yes	Yes

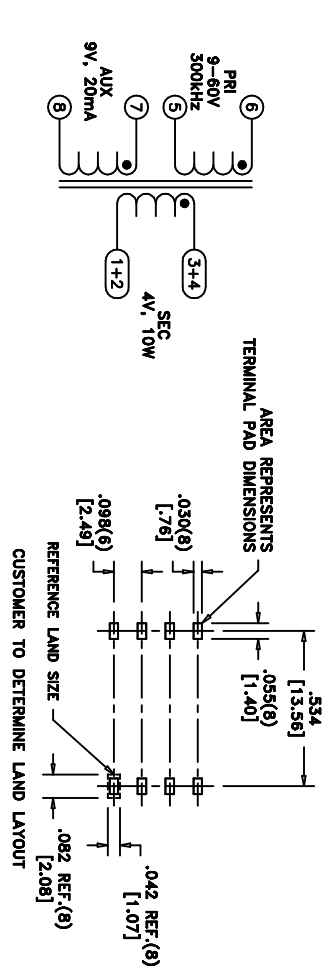


ELECTRICAL SPECIFICATIONS @ 25°C unless otherwise noted:

PARAMETER	TEST CONDITIONS	VALUE
D.C. RESISTANCE	7-8 @20°C	0.165 ohms max.
D.C. RESISTANCE	5-6 @20°C	0.075 ohms max.
D.C. RESISTANCE	2-4 tie(+2, 3+4), @20°C	0.010 ohms max.
INDUCTANCE	5-6 10kHz, 100mVAC, 1s	16.9uH ±10%
LEAKAGE INDUCTANCE	5-6 tie(+2+3+4, 7+8), 100kHz, 50mVAC, 1s	500mH max.
DIELECTRIC	1-8 tie(3+4, 8+7), 150VAC, 1 second	-
DIELECTRIC	6-8 500VDC, 1 second	-
TURNS RATIO	(8-5):(4-2), tie(+2, 3+4)	3,200:1, ±3%
TURNS RATIO	(8-5):(7-8)	1,455:1, ±3%



LOT CODE & DATE CODE
DOT LOCATES TERM. #8



AREA REPRESENTS
TERMINAL PAD DIMENSIONS
REFERENCE LAND SIZE
CUSTOMER TO DETERMINE LAND LAYOUT

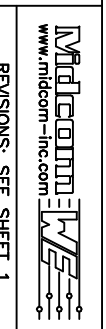
REV.	DATE

6A 6/09

Packaging Specifications
Method: Tape & Reel
PKG-0328
www.midcom-inc.com

Unless otherwise specified:
Tolerances: ±1/64
Angles: ±1°
Fractions: ±1/64
Decimals: ±.005[.127]
This drawing is dual dimensioned.
Dimensions in brackets are in millimeters.

DRAWING TITLE
TRANSFORMER
eSos p/n: 750310854



DRAWING NO.
750310854
SCALE ---
SHEET 2 OF 5