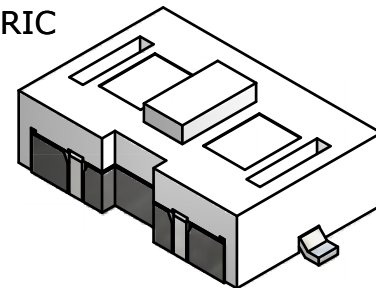
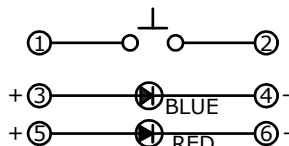


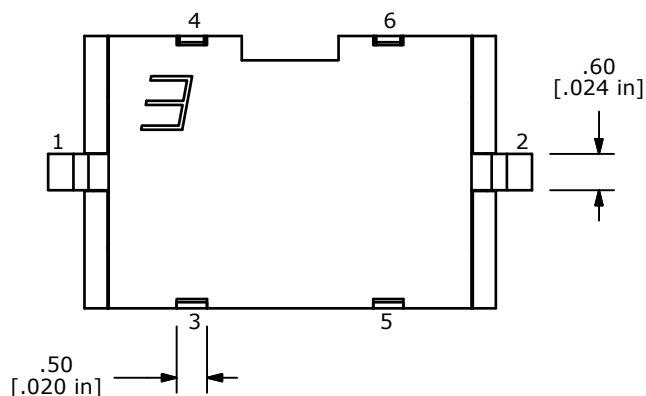
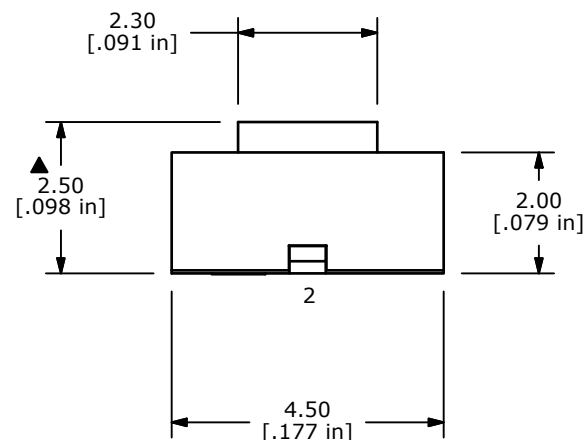
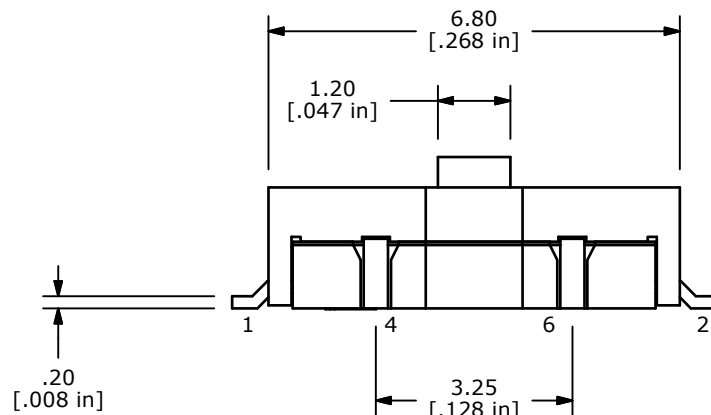
ISOMETRIC



PC MOUNTING



▲ CIRCUIT: OFF - (ON)



NOTES:

1. ALL DIMENSIONS IN MM [INCH]
2. GENERAL TOLERANCE: X.X=±0.4  
X.XX=±0.25
3. RATING: 12VDC, 50mA MAX.
4. CONTACT RESISTANCE: 500mΩ MAX.
5. INSULATION RESISTANCE: 100VDC, 100MΩ MIN.
6. TRAVEL: 0.25 mm
- ▲7. OPERATING FORCE: 160 +75/-30gf
8. OPERATING TEMPERATURE: -20°C TO 70°C
9. OPERATING LIFE: 30,000 CYCLES.
10. PACKAGING: TAPE & REEL, 3000 PIECES PER REEL
11. ▲ DENOTES CRITICAL PARAMETER
12. 2002/95/EC (ROHS) COMPLIANT
13. PLASTIC MATERIALS MEET OR EXCEED UL94-V0

▲ LED SPECS	UNITS	BLUE	RED
FORWARD CURRENT	mA	20	20
FORWARD VOLTAGE	V	2.8 - 3.3	1.95 - 2.5
LUMINOUS INTENSITY	mcd	80	230



A	20342	RELEASED FOR PRODUCTION	12/15/11	BGL
REV	PCR NO	DESCRIPTION	DATE	BY

TITLE TL3200AF160BRQ				
SCALE	DATE	DR	DWG	REV
8:1	12/15/2011	BGL	B200114	A

THE INFORMATION CONTAINED IN THIS DOCUMENT IS PROPRIETARY TO E-SWITCH AND IS NOT TO BE COPIED OR TRANSFERRED